

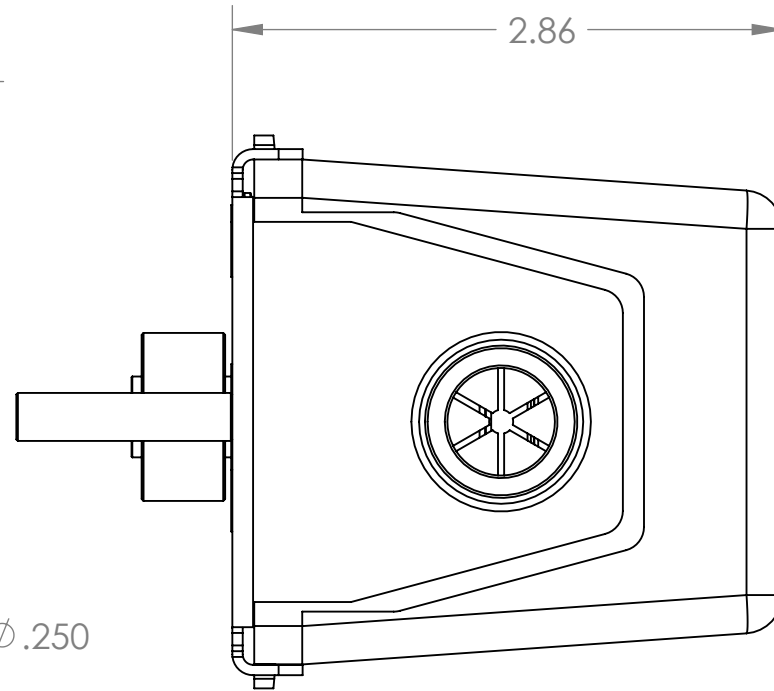
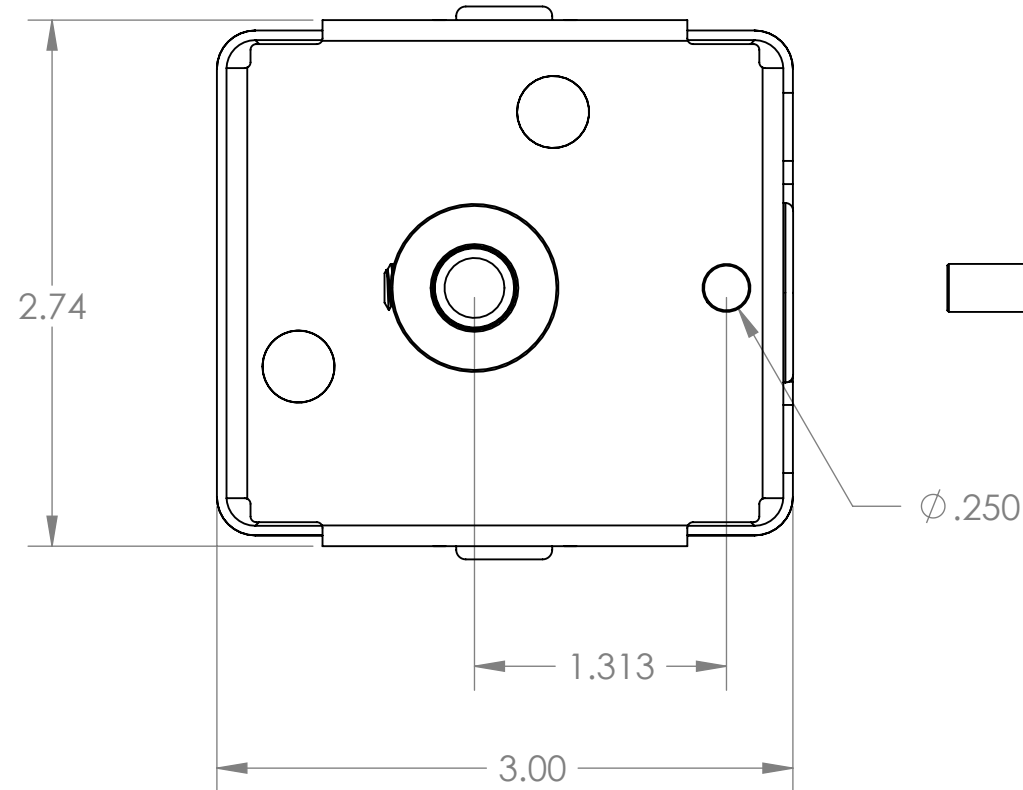
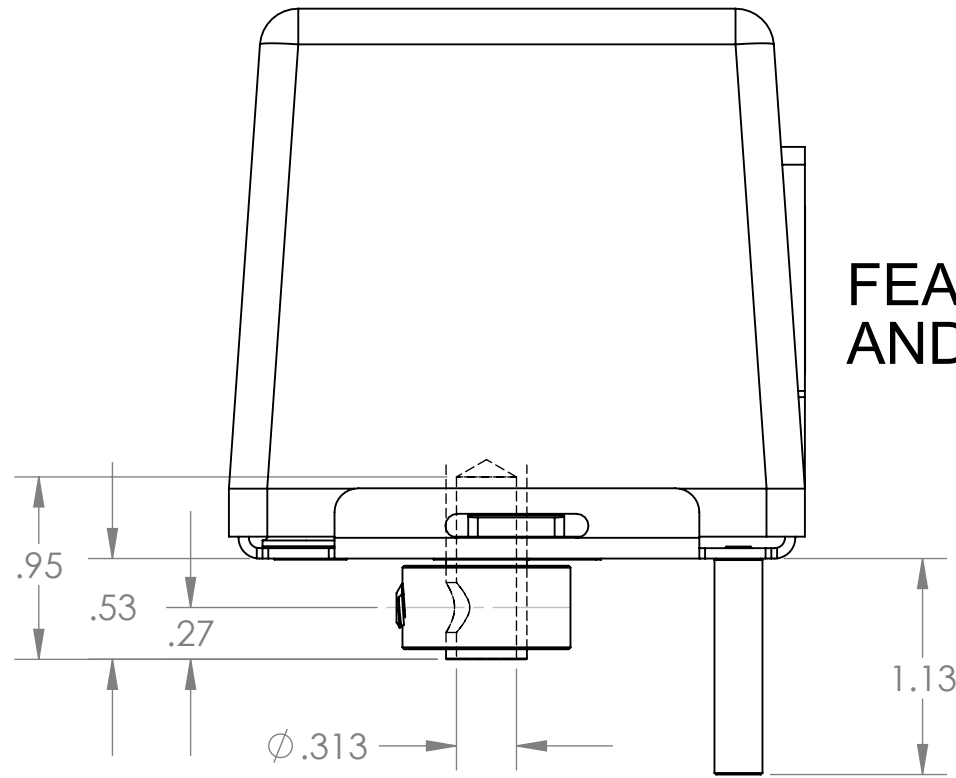
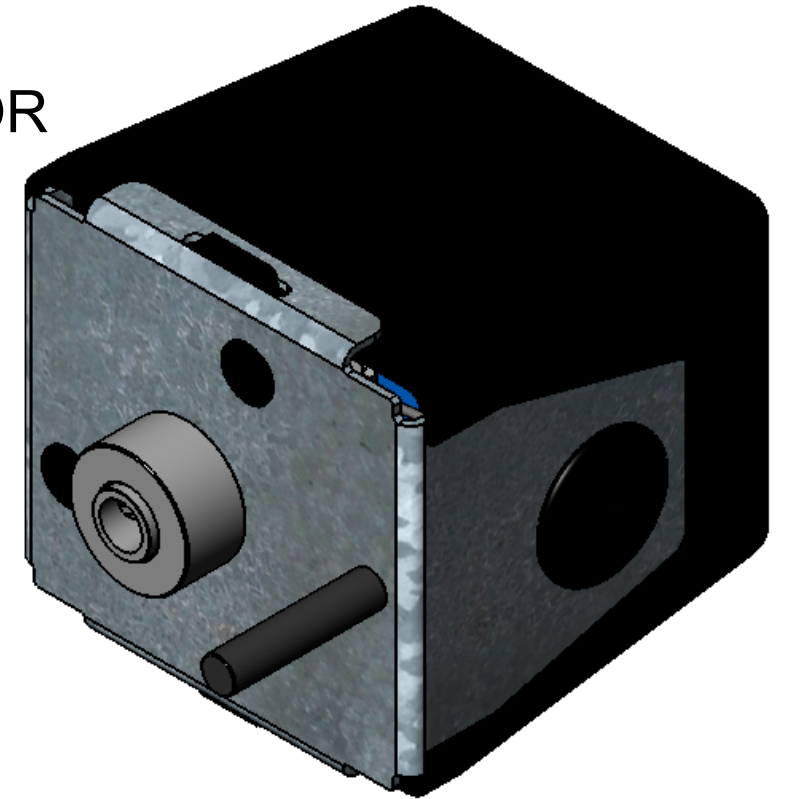
THIS DOCUMENT CONTAINS TRADE SECRET AND PROPRIETARY INFORMATION OF HANSEN CORPORATION ("HANSEN") AND/OR ITS AFFILIATES OR CUSTOMERS. THE POSSESSOR AGREES TO MAINTAIN THIS DOCUMENT IN STRICT CONFIDENCE AND IS PROHIBITED FROM COPYING, DISTRIBUTING, REVEALING, OR PUBLISHING IT IN WHOLE OR IN PART WITHOUT HANSEN'S EXPRESS WRITTEN PERMISSION.

DRAWING NO.  
135-6-

PRODUCT SPECIFICATIONS:

- 1) ACTUATOR TYPE: POWER OPEN AND SPRING CLOSED.
- 2) ACTUATOR MOUNTING: SET-SCREW CLAMPING TO 5/16 INCH DIAMETER DAMPER SHAFT AND ANTI-ROTATION PIN AS SHOWN.
- 3) ACTUATOR ROTATIONAL TRAVEL: 90 DEGREES (OPEN TO CLOSE POSITIONS).
- 4) ACTUATOR ELECTRICAL CONNECTION: TWO WIRES.
- 5) AVAILABLE WITH SOFT FINISH SPRING FOR MAXIMIZING LIFE IN LOW FRICTION APPLICATIONS OR STRONG FINISH SPRING FOR HIGHER FRICTION APPLICATIONS

FEATURING THE ORIGINAL SYNCHRON MOTOR AND THE "WHISPER MOTION" AIR BRAKE



\*Performance values are nominal at rated voltage, not guaranteed minimums or maximums

Part #	AC Input Volts	Power Input Watts	Power Rotation Open	Power Start in-oz	Power Finish in-oz	Open Time sec	Spring Start in-oz	Spring Finish in-oz	Close Time sec
135-6-1	24/60	6	CW	90	45	30	45	15	8
135-6-3	120/60	6	CW	90	45	30	45	15	8
135-6-7	230/50	6	CW	80	40	30	45	15	8
135-6-8	24/60	6	CW	65	45	30	45	30	6

ITEM NO.	PART NO.	DESCRIPTION / SPECIFICATION	QTY.
----------	----------	-----------------------------	------

BILL OF MATERIALS

UNLESS OTHERWISE SPECIFIED DIMENSIONS ARE IN INCHES TOLERANCES ARE:  
X.XX ± .010 X.XXX ± .005  
ANGLES ± .5°  
DO NOT SCALE DRAWING

CAD GENERATED DRAWING, DO NOT MANUALLY UPDATE

CAD FILE:  
 HANSEN CORPORATION  
901 S. 1st. STREET  
PRINCETON, IN. 47670-2369  
SYNCHRON

DRAWING INTERPRETATION IN ACCORDANCE WITH; DOD-STD -100 ASME Y14.5M-1994

APPROVALS	DATE
DRAWN BY	
CHKD BY	
DES ENG	
MFG ENG	
QA	

TITLE  
HANSEN DAMPER ACTUATOR

DRAWING NO. 135-6-

UNLESS OTHERWISE SPECIFIED, ALL TOLERANCES AND DATUMS APPLY RFS.

SCALE SIZE B SHEET 1 OF 1

LET	DESCRIPTION	DATE	CHKD BY